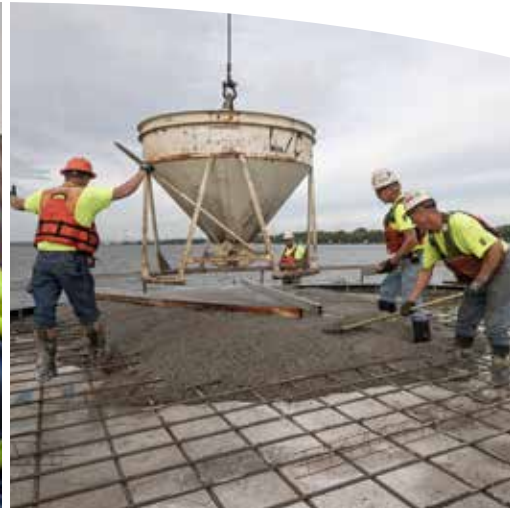




# MARINE CONSTRUCTION INLAND WATERWAYS



**Your trusted resource along  
the inland waterways.**



# MARINE PROFESSIONALS SINCE 1919

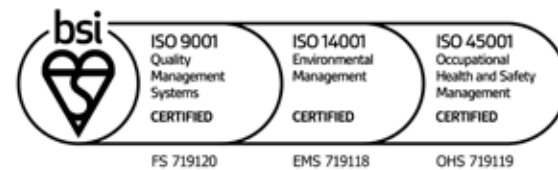
**J.F. Brennan Company, Inc.** (Brennan) is a family-owned marine construction, environmental remediation, and barge transportation firm operating throughout the United States. For over 100 years, our high-quality work and transparent communication with clients have made us a preferred contractor for public and private owners of water-based infrastructure.

## SAFETY FIRST

Safety is at the forefront of every task we perform and every decision we make. We provide our crews with extensive training, the right equipment, and proper support to do their jobs. From our safety-based observation program to our culture of empowerment, we identify risks and take the required steps to mitigate those risks as we execute our work. Brennan is certified to the ISO 45001 standard (Occupational Health and Safety Management).

## QUALITY

We take pride in delivering the highest quality work. Our total quality management (TQM) program ensures we consistently meet and exceed expectations. We are certified to the ISO 9001 and ISO 14001 standards (Quality Management and Environmental Management, respectively).



## PEOPLE

Our organizational culture sets us apart. We prioritize safety, quality, and efficiency, making our company the best possible place for all our employees to work. Our culture is rooted in everything we do, centered around open communication, respect, and accountability. This is how we execute work for our clients with the highest levels of integrity, transparency, and professionalism.



# OUR SERVICES

At Brennan, we provide quality **above- and below-water** marine construction services to partners on the Great Lakes, inland, and intercoastal waterways. We work closely with our clients, their engineers, and all stakeholders to deliver innovative solutions to their biggest challenges.

## AREAS OF FOCUS

- » Marine Construction
- » Inland Waterway Infrastructure
- » Barge Terminals
- » Harbor Services
- » The Great Lakes
- » Public Waterfront and Marinas
- » Dredging
- » Underwater Inspections and Survey





## MARINE CONSTRUCTION

Since 1919, we've installed and repaired **structures above, alongside, and below the waterline**. Our topside crews and Diving Contractors International, Inc. (ADCI)-certified divers are trained and experienced in challenging environments, completing client projects safely, on schedule, and within budget.

Brennan excels in marine construction projects of all sizes. From multi-million-dollar capital projects to half-day dive inspections, our strong bonding capacity and expertise ensure a high-quality, professional partnership.

### EARLY CONTRACTOR INVOLVEMENT MATTERS

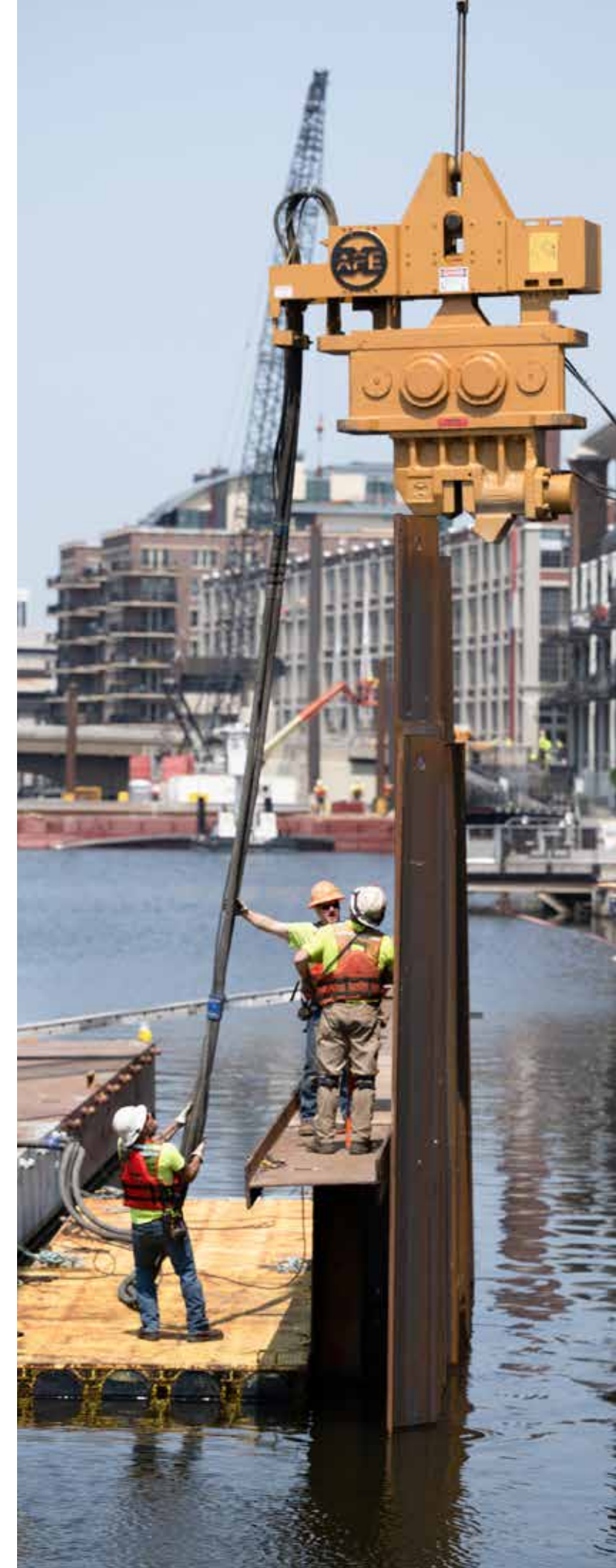
By partnering early, we pinpoint challenges and collaborate with all stakeholders on design and constructability.

- » Reduces cost escalation
- » Enhances project coordination
- » Results in fewer delays
- » Improves communication
- » Lowers risk for all teammates
- » Provides more accurate cost predication

*Brennan was a pleasure to work with. They were very professional and knowledgeable in the area they were contracted to do. They understood the big picture and their field staff especially went above and beyond. They helped us to make this project successful and were ultimate team players.*

”

**Bob Janssen**  
Kraus-Anderson



# INLAND WATERWAY INFRASTRUCTURE

After a century of working on water-based infrastructure, we know how to tailor our comprehensive marine construction solutions to facilities' needs. From concrete placement to sheet pile installation, you'll benefit from our **extensive experience** completing safe, high-quality, cost-efficient infrastructure upgrades along the inland waterways.

## AREAS OF EXPERTISE

- » Barge terminals
- » Closed cell heavy-lift docks
- » Intakes and outfalls
- » King pile wall systems
- » Marinas
- » Open cell structures
- » Pipe pile structures
- » Public waterfronts
- » Sheet pile walls





## BARGE TERMINALS

With a deep understanding of your unique challenges, we **efficiently construct and repair** heavy lift docks, loading docks, dry bulk and liquid bulk terminals from the water and land.

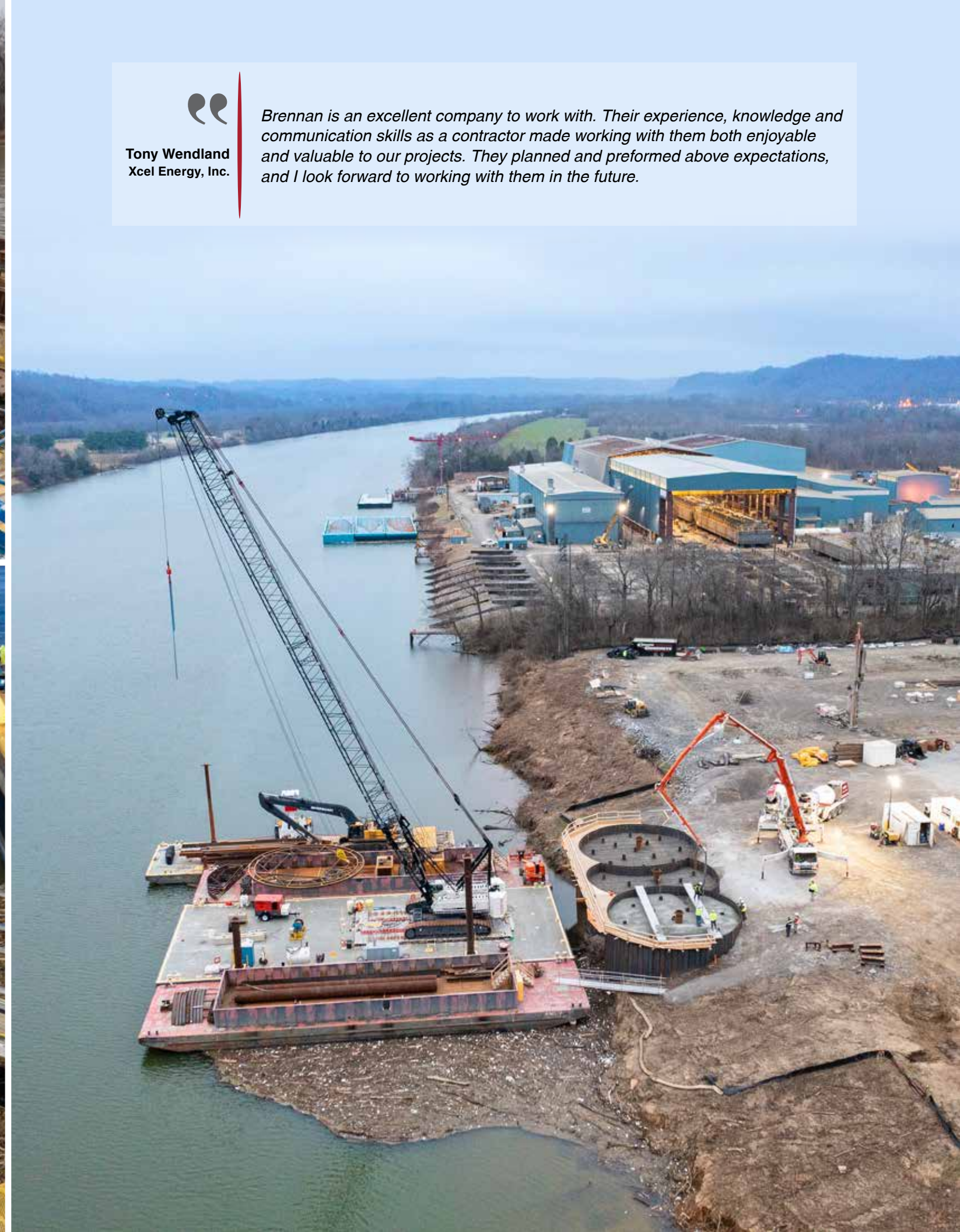
### AREAS OF EXPERTISE

- » Above- and below-water terminal repairs
- » Concrete repairs
- » Mooring, berthing, and breasting dolphins
- » Rip rap and rock placement



Tony Wendland  
Xcel Energy, Inc.

*Brennan is an excellent company to work with. Their experience, knowledge and communication skills as a contractor made working with them both enjoyable and valuable to our projects. They planned and performed above expectations, and I look forward to working with them in the future.*



## HARBOR SERVICES

When Brennan Marine manages your harbor operations, you benefit from **real-time updates on barge locations and precise arrival times**, maximizing efficiency and reducing wait times.

All our vessels meet US Coast Guard Subchapter M compliant standards, ensuring the highest level of safety and reliability. We deliver safe, professional, and transparent services you can count on.

### AREAS OF EXPERTISE

- » Barge cleaning
- » Shipyard services
- » Short haul towing
- » Switching and fleetling
- » 24-hour dispatch



*Brennan just GETS it. They understand inland terminal operations and how downtime for a project or emergency repair can significantly impact the owner's business. It is not often you find a contractor, like Brennan, that can combine this understanding with their own set of skills, knowledge and expertise. They truly want to do what is best for the customer.*

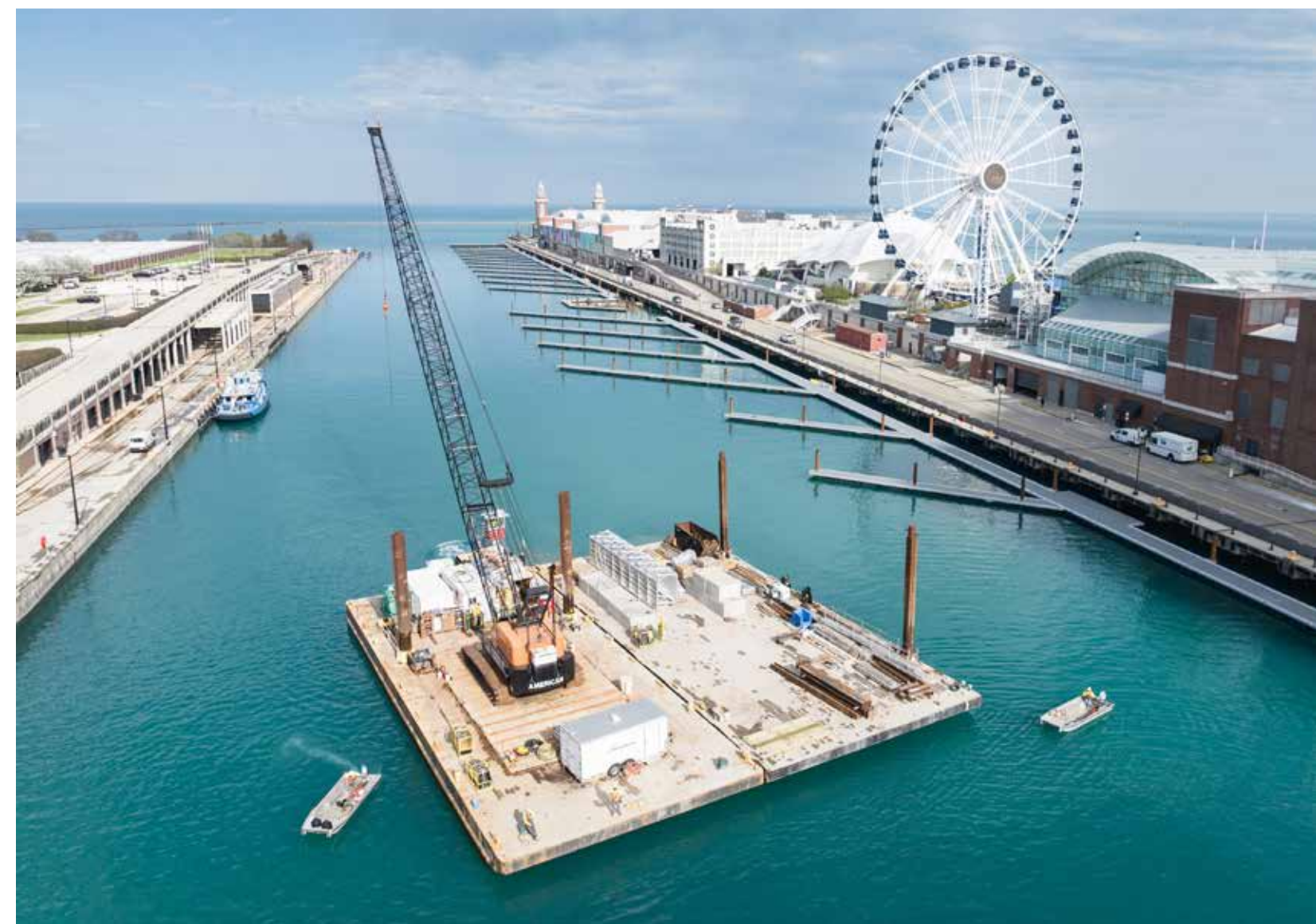
”

**Alexander Beck**  
Consolidated  
Terminals and  
Logistics Company

# THE GREAT LAKES

Brennan constructs and maintains **ship terminals, repairs and builds docks, executes large-scale rock work, and supports mining and energy operations** on the Great Lakes.

With a strong and long track record of successful projects for the US Army Corps of Engineers, we ensure the highest quality and safety standards. Our experienced team is dedicated to delivering top-notch results, helping you thrive in the dynamic Great Lakes region.



Natalie Mills  
US Army Corps  
of Engineers

*What I really liked about collaborating with Brennan was the communication. They were always very forthcoming, honest, provided valuable feedback to us in trying to come up with solutions.*





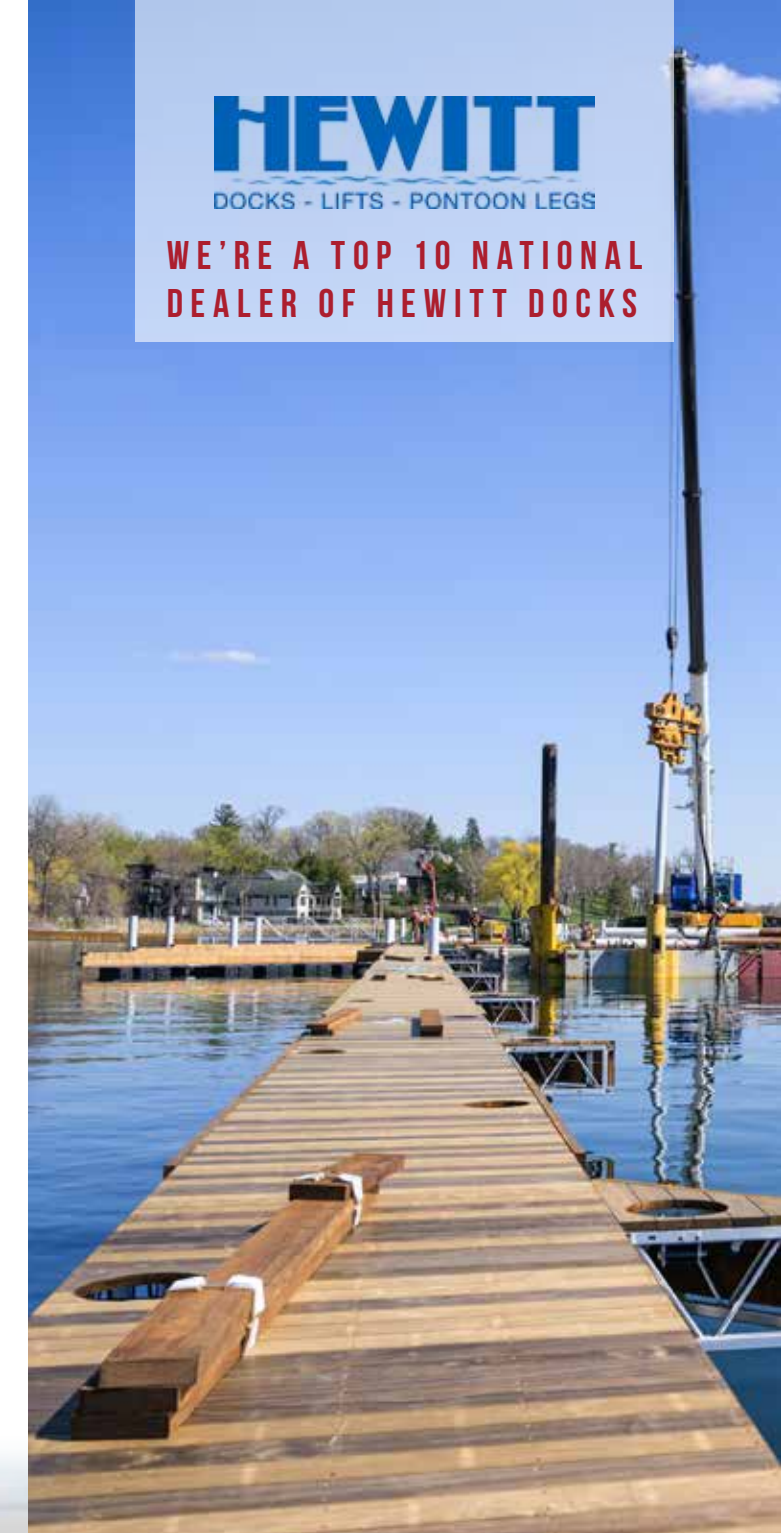
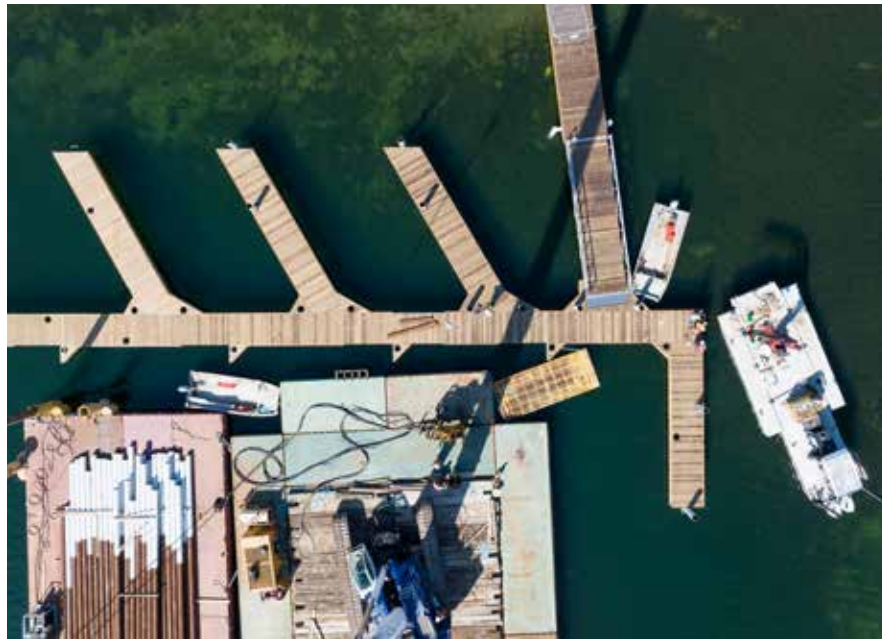
## PUBLIC WATERFRONT AND MARINAS

We specialize in transforming public waterfronts into vibrant, inviting spaces. From serene lakefront parks to bustling marinas, we collaborate seamlessly with public and private organizations, government bodies, engineers, and waterfront property owners.

Our skilled team combines craftsmanship with innovation to **restore and construct** durable, safe, and visually stunning waterfronts, enhancing functionality and beauty for communities to enjoy.

### AREAS OF EXPERTISE

- » Breakwaters
- » Boat landings
- » Cruise ship terminals
- » Fishing piers
- » Industrial waterfronts
- » Marinas
- » Pedestrian docks
- » Waterfront promenades



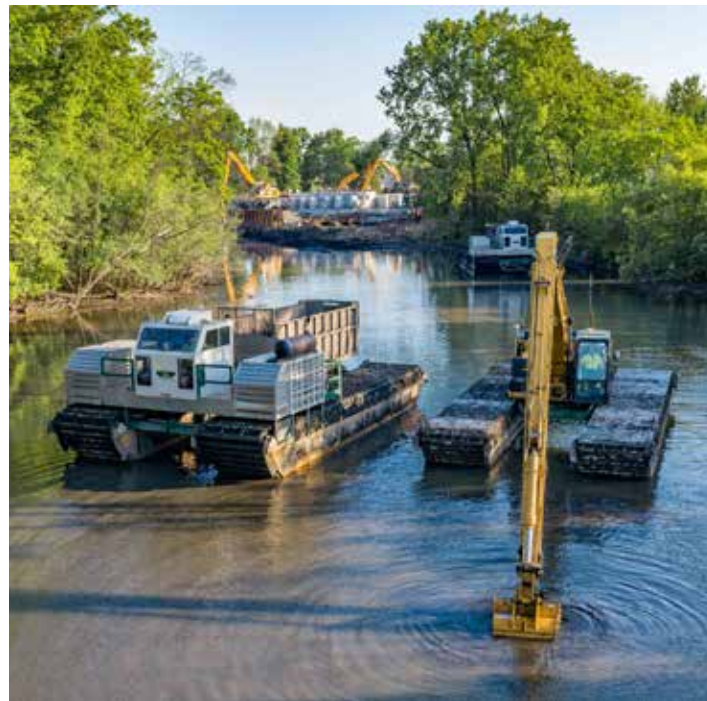
**HEWITT**  
DOCKS - LIFTS - PONTOON LEGS

**WE'RE A TOP 10 NATIONAL  
DEALER OF HEWITT DOCKS**



# DREDGING

Brennan began dredging over 70 years ago, performing top-tier **mechanical and hydraulic dredging** for waterways nationwide. We dredge around piers, shipping channels, and inland infrastructure with minimal disruption to your operations.



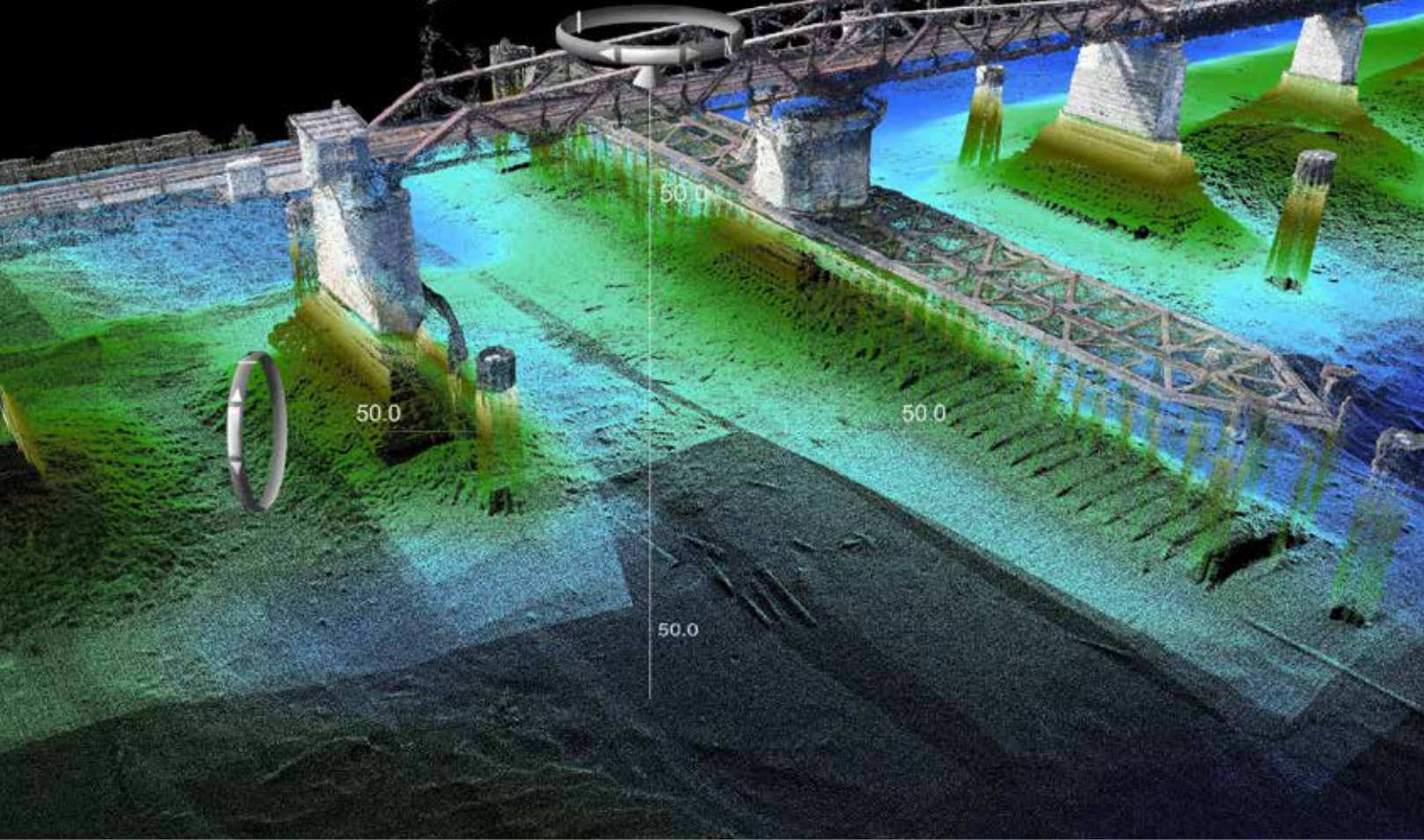
## AREAS OF EXPERTISE

- » Hydraulic dredging
- » Mechanical dredging
- » Diver-assisted micro-dredging
- » Barge and pipeline transport
- » Dewatering
- » Water quality management
- » Marsh and wetland restoration



**George Meister**  
GEI Consultants, Inc.

*Working with Brennan has been a positive experience from start to finish. It's great to work with a contractor you can trust to have the client's best interest in mind with or without oversight.*



## UNDERWATER INSPECTIONS AND SURVEY

When a project's greatest risks are its unknowns, we deploy our licensed hydrographers and advanced survey equipment to create **detailed models** of the anticipated work area. Our underwater investigation capabilities surpass other contractors, and include:

- » Dive inspections
- » Light detection and ranging (LiDAR)
- » Multi-beam and single-beam bathymetric surveys
- » Photogrammetry
- » Remotely operated vehicles (ROVs)
- » Side-scan sonar
- » Underwater acoustic imaging
- » Voyis Visual Simultaneous Localization and Mapping (VSLAM)



### DIVE INSPECTIONS

With **100+ ADCI-certified divers on staff**, we conduct a thorough assessment of your structure, identify areas of interest, and produce a detailed report that can be used for further analysis.

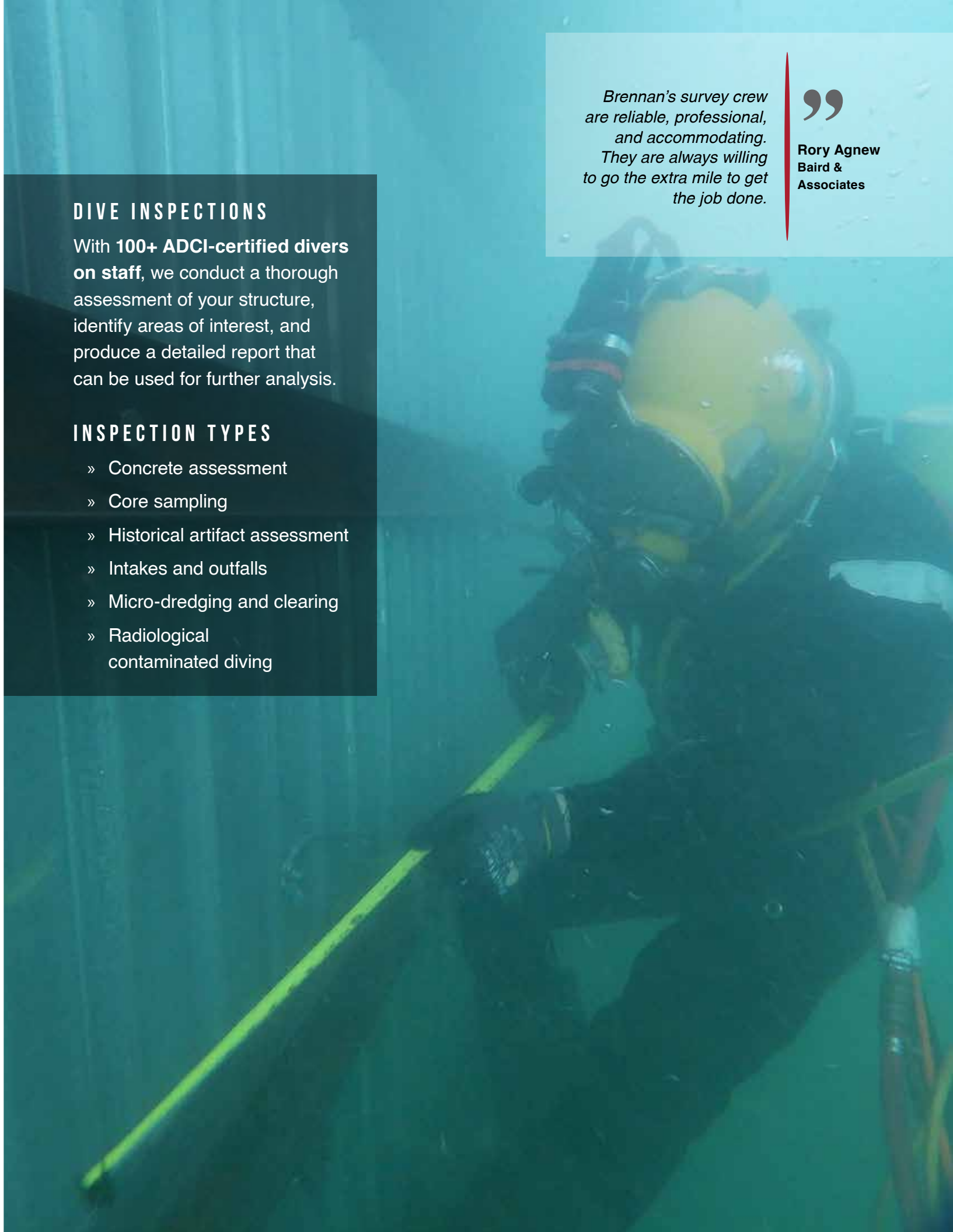
### INSPECTION TYPES

- » Concrete assessment
- » Core sampling
- » Historical artifact assessment
- » Intakes and outfalls
- » Micro-dredging and clearing
- » Radiological contaminated diving

*Brennan's survey crew are reliable, professional, and accommodating. They are always willing to go the extra mile to get the job done.*

”

**Rory Agnew**  
Baird &  
Associates





## OUR MISSION

We create and execute innovative solutions to the world's most complex maritime, environmental, and infrastructure challenges.

## OUR VISION

We will be the best at delivering innovative solutions to the world's most demanding environmental and infrastructure challenges. We will continuously develop unparalleled intellectual capital, redefining what is possible while setting the industry standard for safe and ethical practices. Our work will make Brennan the most respected company in our markets.



Stay in the loop with project updates, videos, and current events at Brennan.

